

PRECAUTIONS

- READ LABEL BEFORE USE.
- KEEP IN A SAFE PLACE. KEEP OUT OF REACH OF CHILDREN.
- DO NOT BREATHE SPRAY MIST.
- DO NOT CONTAMINATE FOODSTUFFS, EATING UTENSILS OR FOOD CONTACT SURFACES.
- WASH HANDS THOROUGHLY AFTER HANDLING.
- AVOID CONTACT WITH EYES. Causes serious eye irritation. If in eyes: rinse cautiously with water for several minutes. If eye irritation persists: get medical advice/attention.
- Use only in well-ventilated areas. Vapours can cause drowsiness and dizziness.
- REMOVE OR COVER TERRARIUMS, AQUARIUMS AND ANIMAL CAGES before application. TURN OFF AQUARIUM AIR-FILTERS while spraying. This advice to include FISH TANKS and FISH BOWLS. VERY TOXIC TO AQUATIC LIFE WITH LONG LASTING EFFECTS.
- COVER ALL WATER STORAGE TANKS before application.
- ALL BATS ARE PROTECTED UNDER THE WILDLIFE AND COUNTRYSIDE ACT 1981, BEFORE TREATING ANY STRUCTURE. USED BY BATS. CONSULT NATURAL ENGLAND, SCOTTISH NATURAL HERITAGE OR THE COUNTRYSIDE COUNCIL FOR WALES.
- HAZARDOUS TO BEES.
- DO NOT APPLY DIRECTLY TO ANIMALS.
- EXCLUDE ANIMALS DURING APPLICATION.
- DO NOT APPLY TO CLOTHING OR HUMAN BEDDING.
- Keep away from food drink and animal feeding stuffs.
- This material and its container must be disposed of in a safe way.

STATUTORY CONDITIONS OF APPROVAL RELATING TO USE

FOR USE ONLY AS AN INSECTICIDE
Apply from a distance of 15-23cm (6-9"), spray directly at surfaces on which insects walk or into cracks, crevices and other insect harbourages. Re-apply as necessary. Users must comply in full with all their legal responsibilities under the Control of Pesticides Regulations (1986 (as amended), including Complying with all Conditions of Approval.
READ ALL PRECAUTIONS BEFORE USE.
HSE NO. 9708

DANGER

EXTREMELY

FLAMMABLE AEROSOL

Keep away from heat, hot surfaces, sparks, open flames and other ignition sources. Do not spray on an open flame or other ignition source. Do not spray on electrical equipment or any incandescent material. Extinguish pilot lights. Until dry, treated surfaces can pose a fire risk. Pressurized container: may burst if heated. No smoking. Avoid release to the environment.

CAUTION

Pressurized container: do not pierce or burn, even after use. Protect from sunlight. Do not expose to temperatures exceeding 50°C/122°F. Use only in accordance with the directions on the label. Expiry date on base of can.

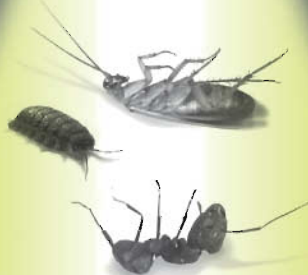


Dethlac®

INSECTICIDAL LACQUER

**KILLS ANTS, WOODLICE,
COCKROACHES
AND OTHER CRAWLING
INSECTS**

TRUSTED FOR
OVER 50
YEARS



New
Improved Formula

EFFECTIVE FOR MONTHS

FOR USE ONLY AS AN INSECTICIDE

THIS PRODUCT CONTAINS DELTAMETHRIN 0.02% w/w PYRETHRINS 0.08% w/w

DETHLAC INSECTICIDAL LACQUER is for amateur and professional use against ants, cockroaches, woodlice and other crawling insects. For both indoor and outdoor use in domestic premises. **Dethlac** has been eliminating insects effectively since 1959.

DETHLAC dries to a hard clear film which kills insects within a few hours of coming into contact with treated surface. One application remains fully effective for months, even when it rains. You can wash the surface (with or without detergents) and **Dethlac** will go on killing insects.

DETHLAC is not designed as a space spray, it is a surface spray (spot, band and crack and crevice treatment) and may be applied to any hard non-porous surface i.e. on doors, window frames (not uPVC) skirting boards, shelves, concrete patios, etc. It should not be sprayed onto wallpaper, fabrics, furniture or matt surfaces. **DO NOT APPLY TO HUMAN CLOTHING OR BEDDING AND DO NOT APPLY IN OR AROUND DRAINS.** Blocked nozzles can be cleared by lifting off and soaking in methylated spirit or white spirit.

DIRECTIONS FOR USE

- Read all precautions before use.
- Shake well before use.
- Apply in bands 8-15cms (3-6") in width.
- Spray up to a maximum of 5 second bursts at a distance of 15-23cms (6-9") directly at surface.
- Spray onto surfaces on which insects walk, into cracks, crevices and other insect harbourages.
- Test on a small inconspicuous area.
- Re-apply as necessary.
- Wear suitable protective synthetic/pvc gloves when using.
- When using do not eat, drink or smoke.
- Excess **Dethlac** may be removed from surface with methylated spirit, test small area first.
- USE ONLY AS DESCRIBED ON LABEL.

Professional Operators: Avoid excessive contamination of coversalls.

In case of insufficient ventilation wear suitable respiratory equipment.

The COSHH Regulations 2002 (as amended) apply to the use of this product at work.

DURING APPLICATION Children and pets should be kept away from treated surfaces until product is dry.

IMPORTANT: In the event of a serious mishap with this product, seek medical advice immediately and show this container.

NOTE TO DOCTOR: Medical advice can be obtained from a Poisons Information Centre.



250ml e 135

Made in EU

Garhand Pharmaceuticals Ltd.

PO Box 777 London SW19 5DY

www.dethlac.com 020 8944 0505



5 014009 022616 >

59585